



Mie University Community-University Research Cooperation Center

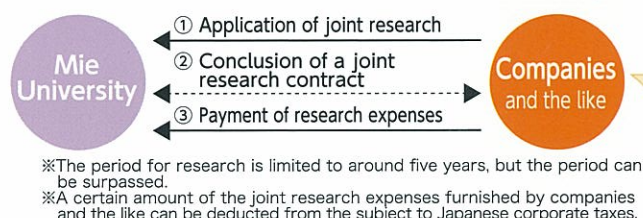
# Research Cooperation Systems

## Joint Research System

Researchers on Mie University carry out contract-based "Joint Research" on an equal footing with researcher from general companies or public organizations. This is aimed at shared research challenges in an attempt to give rise to superior research results. The types of research include those listed below.

### Types of Joint Research

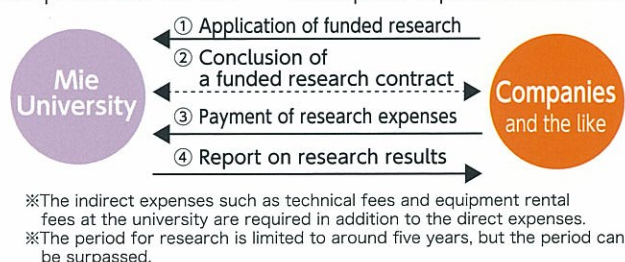
- 1 **Research conducted by taking in only researchers from companies and the like, named Joint Researchers, to the university**  
It is required that researchers' expenses of 420,000 yen in cases where the research exceed six months within the fiscal year, and 210,000 yen when it is six months or less.
- 2 **Research conducted by taking in researches from companies and the like, named Joint Researchers, and receiving direct expenses to the university**  
It is required that the abovementioned researchers expenses and direct expenses including rewards, travel expenses, supplies expenses, facilities and equipment expenses, their service fees, utilities, etc., as well as general administrative costs.
- 3 **Research conducted by receiving direct expenses including the general administrative costs mentioned above in cases where different researchers divide up shared challenges at the university or companies**



The handling of intellectual property rights varies depending on the degree of contribution from the companies and the like towards the joint research with Mie University. Depending on this, such rights may either become the sole property of Mie University, or be jointly owned by both.

## Funded Research System

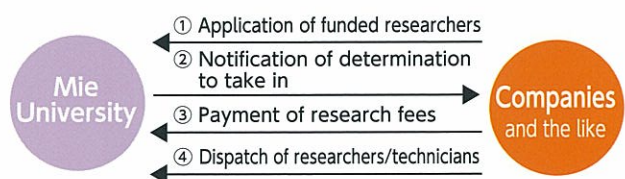
This is a research which is carried out by researchers on Mie University upon external consignment from companies and the like. The required expenses are borne by the consigner.



The handling of intellectual property rights are essentially attributed to Mie University. However, the university can grant a portion of its intellectual property rights to the consigner according to the application filed by the consigner. Furthermore, the intellectual property can be preferentially executed from the application date, so long as it is done by the consigner or a party designated by the consigner.

## Funded Researchers System

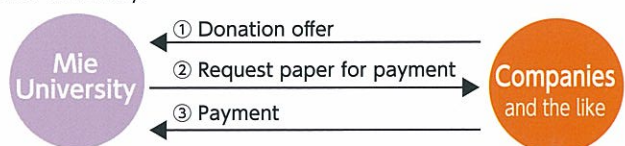
This is a system whereby researchers or technicians currently employed at companies and the like are taken in as "Funded Researchers" and they can take research guidance at the graduate school level. In addition we have a private trainees' system by taking in teaching staffs from public universities, professional schools, private universities and special training school.



Category	Research periods	Research fees
Long-term	From over 6 months to 1 year	541,200 yen
Medium-term	6 months or less	270,600 yen
Special cases	3 months or less (Certain national organizations only)	135,300 yen

## Donation System

We widely accept donations from various quarters including companies and individuals. This system is designed to enhance and expand upon academic research or education, and put the donation to a wide-range-use for the service of Mie University.



※Favorable tax treatment can be received by Japanese corporate tax law and Japanese income tax law.

**Examinations are conducted on the second and the fourth Friday of every month.**

※We will examine the application which has been requested 7days before the examination date.

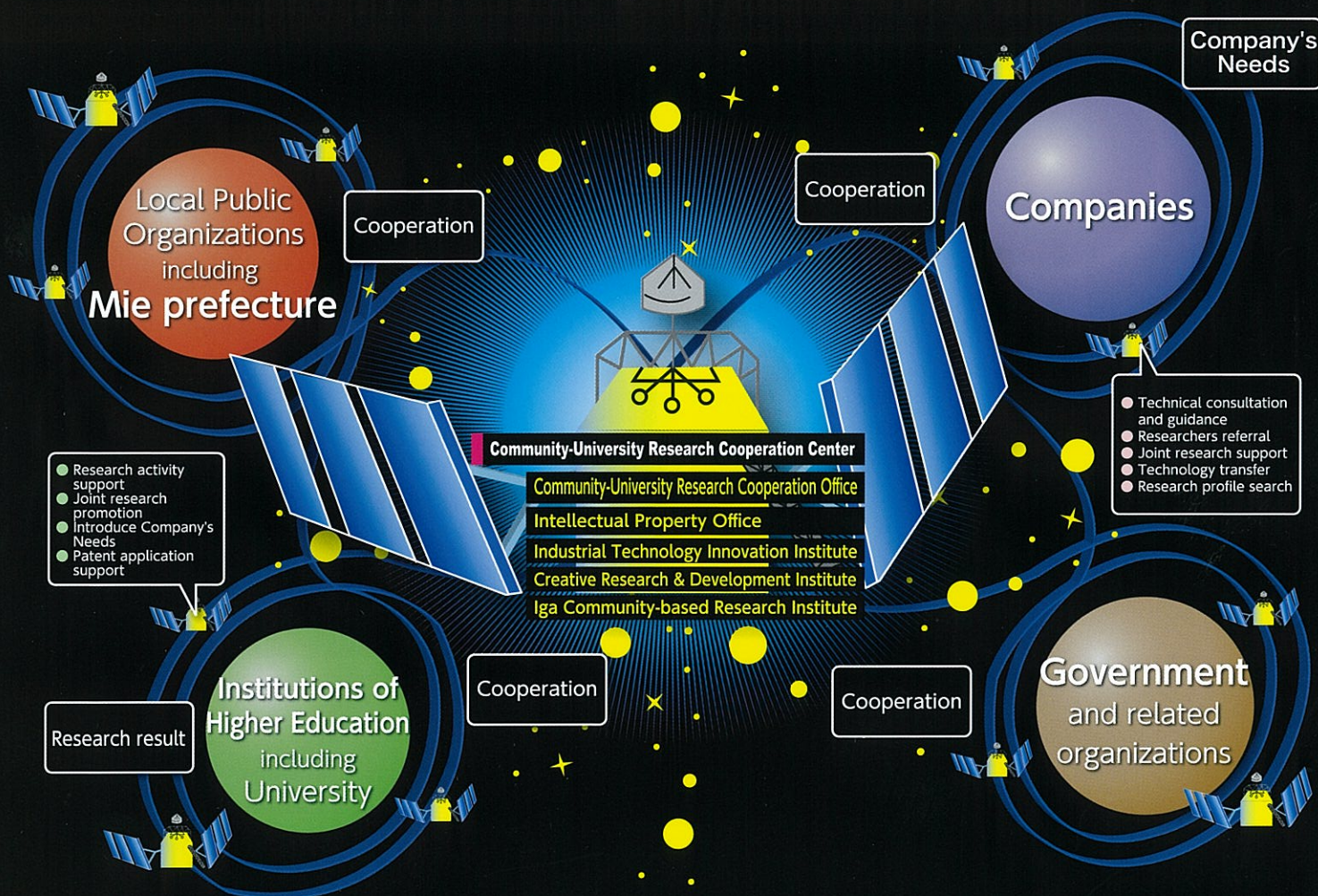
Lectures and laboratories for research and education with external funds

Donation lectures

Industry-academia-government cooperation lecture

Project laboratories

# Community-University Research Cooperation Center works as "a Collaboration Window" for Mie University to promote industry-academia-government cooperation



## Partners of Community-University Research Cooperation Center

### Mie TLO Co., Ltd.

is a Technology Transfer Organization based in the Community-University Research Cooperation Center. It has been approved by the Ministry of Education, Culture, Sports, Science and Technology and the Ministry of Economy, Trade and Industry. Researchers from seven institutes of higher learning in Mie Prefecture, including Mie University, took the lead in its establishment.

### Mie Industry Enterprise Support Center

is an organization which aims to enhance the system of one-stop service to counsel companies' offer, to promote a creation and a cultivation of new industries and to advance management innovations of existing industries. It also actively engages in industry-academia-government cooperation with universities.

### Local public organizations, Commerce and industry associations and relevant organizations

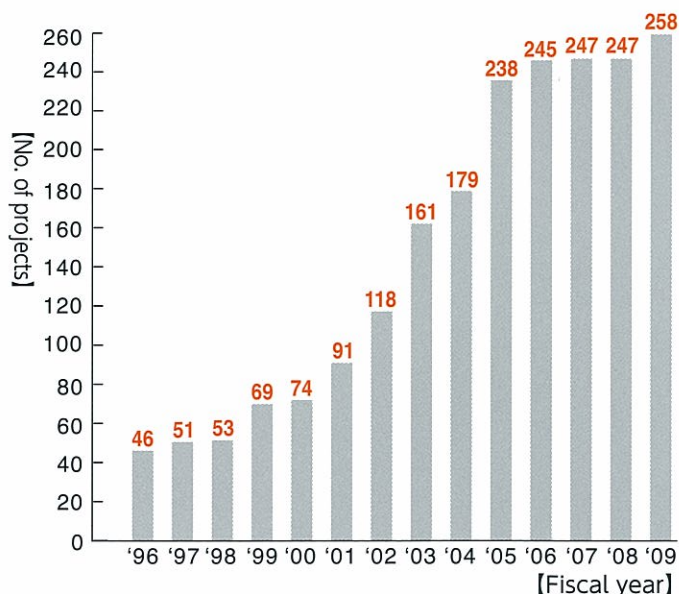
conclude a mutual friendship collaboration agreement with Mie University, engaging in variety of tasks in each area. Cooperating with Commerce and industry associations in various locations, Community-University Research Cooperation Center assist companies in solving the problem which is difficult to solve on its own.

### Companies, Financial institutions and relevant organizations

conclude a framework agreement with Mie University and contribute to society by supporting regional companies to apply intellectual property and providing information to the community.

## Joint Research Performance

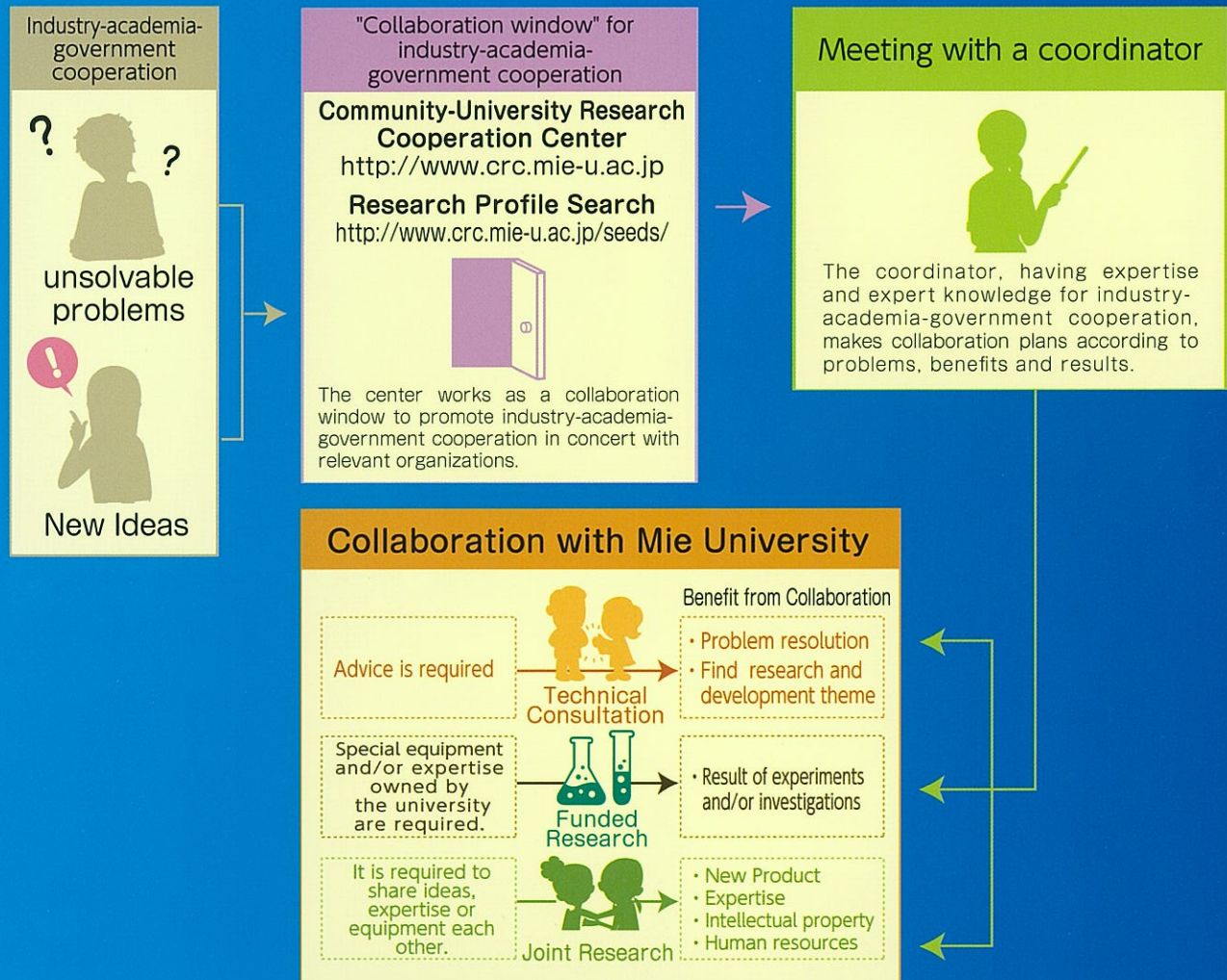
The number of joint research projects with industry-academia-government cooperation has been growing steadily each year.



## How to use Mie University

### ---To promote Industry-Academia-Government Cooperation

#### The Basic flow of Research and Development collaboration with Mie University



#### Systematic collaboration between companies, local public organizations, and more



## By cooperating with Mie University, Revitalize local communities!

**Jun Kumoi**

CEO, Hyakugo Economic Research Institute Co., Ltd.  
Invited Professor of Mie University



*Jun  
Kumoi*

Hyakugo Economic Research Institute Co., Ltd. is a think tank in Mie Prefecture, funded by Hyakugo banking group.

Mie University and we have taken a framework cooperation agreement on industry-academia-government cooperation in 2006 and has steadily built up experience through various activities since then.

The number of private enterprises in Mie Prefecture have declined since 1996. Recently it has become more rapidly.

There are structural factors and the difficulty of finding successors on its background. However, in order to regain the vitality in the region, it is an imperative duty to nurture the seeds of new business for much more appropriate for the times.

As we are aiming to more productive industry-academia-government cooperation, we would like to positively expand our activities in the future.

Mie University has concluded framework agreement and mutual friendship collaboration agreement with companies and local public organizations, and we are advancing various collaboration with local regions.

## For new development, Seek fresh technologies.

**Mariko Ushiba**

CEO, Suzuko Co., Ltd.



*Mariko  
Ushiba*

Suzuko Co., Ltd. has developed automatic equipments and facilities for timber processing. By providing new technologies, we support automating the system of wood processing plant.

We have conducted joint research with Mie University in the area of control technology products last year.

As a result, the research was very valuable to improve our product technology, and its research result was used for our patent application.

Our company had a strong commitment to our self-developed products. Therefore, we changed the perspective for new business deployment and have collaborated with university. It brought the new result.

Considering about global product development as the local company, we think that the local university is one of the best partner. We would like to continue and strengthen the cooperation with Mie University.

Mie University is working toward the creation of new products and new projects through joint researches and technology transfers.

## Nationwide from Mie University, Send information widely and straightly!

**Yoshikuni Kitaoka**

CEO, Medical Engineering Institute Inc.



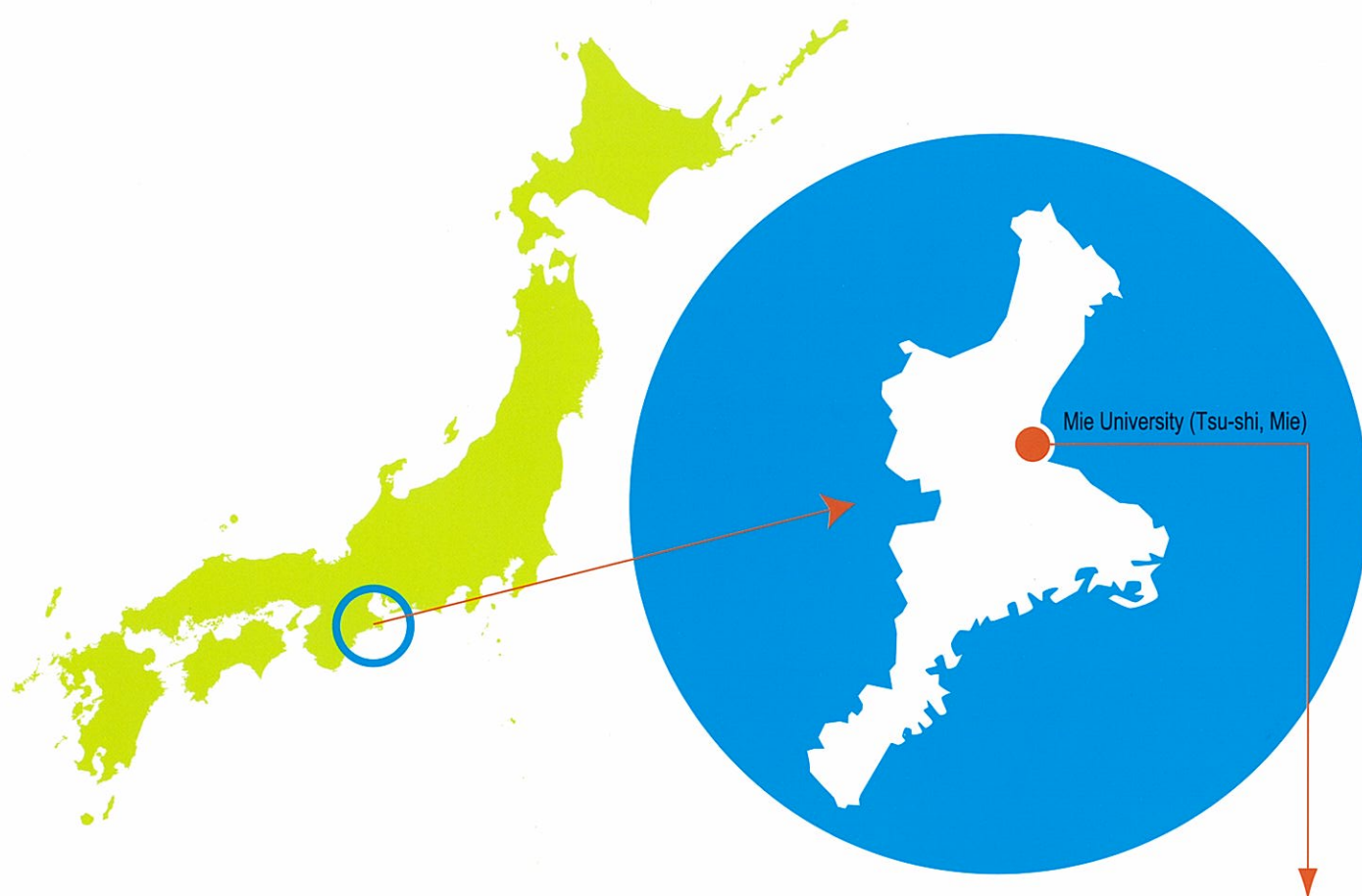
*Yoshikuni  
Kitaoka*

Medical Engineering Institute Inc. provides systems to hospitals across the nation. The system utilize accumulated clinical information to improve daily medical care, medical research and hospital management based on our daily research and development.

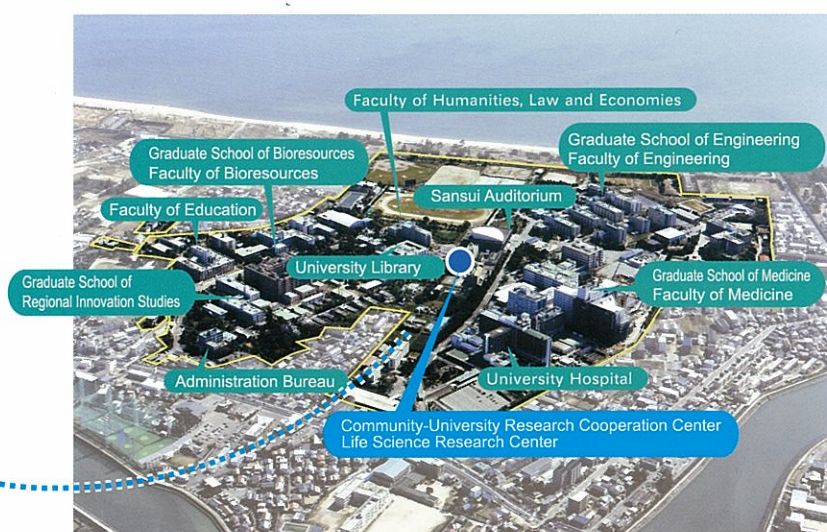
Our company is located at the campus incubator of Mie university. While listening to the voice of staffs in the medical field at Mie University hospital. We would like to contribute the community healthcare even if only slightly. The contribution should be made by developing and proposing the system to support medical field.

And the system can be utilized for medical care and hospital management.

Mie University supports the creation of motivated ventures through its campus incubator.



Community-University  
Research Cooperation  
Center



Mie University

2011.3

## Community-University Research Cooperation Center, MIE UNIVERSITY

1577 Kurimamachiya-cho Tsu-shi, Mie 514-8507 Japan

TEL 059-231-9763 FAX 059-231-9743

E-mail [liaison@crc.mie-u.ac.jp](mailto:liaison@crc.mie-u.ac.jp)

URL <http://www.crc.mie-u.ac.jp>